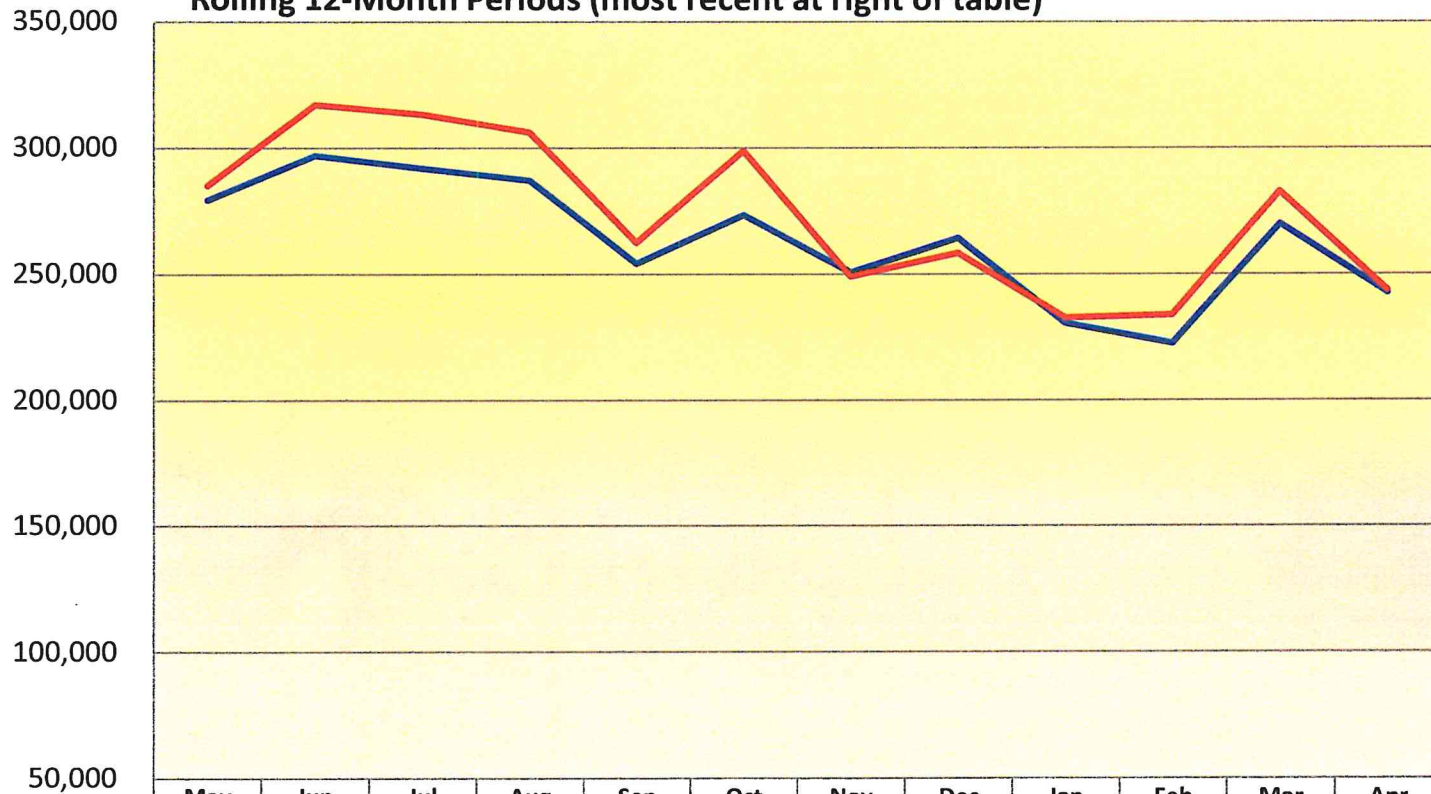


Des Moines Airport Authority  
Traffic Statistics - April 2026

	Month of April		% Incr. (Decr.)	Year to Date		% Incr. (Decr.)
	2026	2025		2026	2025	
<b>PASSENGERS</b>						
Enplaned	121,109	119,507	1.3%	492,959	479,728	2.8%
Deplaned	122,311	123,012	-0.6%	499,205	485,456	2.8%
Total	243,420	242,519	0.4%	992,164	965,184	2.8%
<b>CARGO (LBS)</b>						
Enplaned	1,291,086	1,269,989	1.7%	4,522,523	4,444,228	1.8%
Deplaned	1,609,266	1,761,554	-8.6%	5,541,137	6,227,669	-11.0%
Total	2,900,352	3,031,543	-4.3%	10,063,660	10,671,897	-5.7%
<b>TOTAL PASSENGERS</b>						
ALLEGIANT	36,850	39,537	-6.8%	185,163	178,422	3.8%
AMERICAN	78,751	69,017	14.1%	315,331	274,271	15.0%
DELTA	41,362	46,139	-10.4%	149,952	162,448	-7.7%
FRONTIER	1,938	2,853	-32.1%	17,020	17,893	-4.9%
SOUTHWEST	29,830	33,005	-9.6%	118,228	126,258	-6.4%
UNITED	53,731	51,579	4.2%	203,695	203,904	-0.1%
CHARTERS	958	389	146.3%	2,775	1,988	39.6%
Total	<u>243,420</u>	<u>242,519</u>	<u>0.4%</u>	<u>992,164</u>	<u>965,184</u>	<u>2.8%</u>

## Monthly Passenger Totals

Rolling 12-Month Periods (most recent at right of table)



	May	Jun	Jul	Aug	Sep	Oct	Nov	Dec	Jan	Feb	Mar	Apr
12-24 Months Prior	279,322	296,918	291,706	287,042	254,027	273,275	250,653	264,191	230,364	222,531	269,770	242,519
Prior 12 Months	284,974	317,073	313,121	306,091	262,374	298,751	248,995	258,168	232,647	233,615	282,482	243,420
% change	2.0%	6.8%	7.3%	6.6%	3.3%	9.3%	-0.7%	-2.3%	1.0%	5.0%	4.7%	0.4%

# Passenger Airline Market Share For the Month of April 2026

