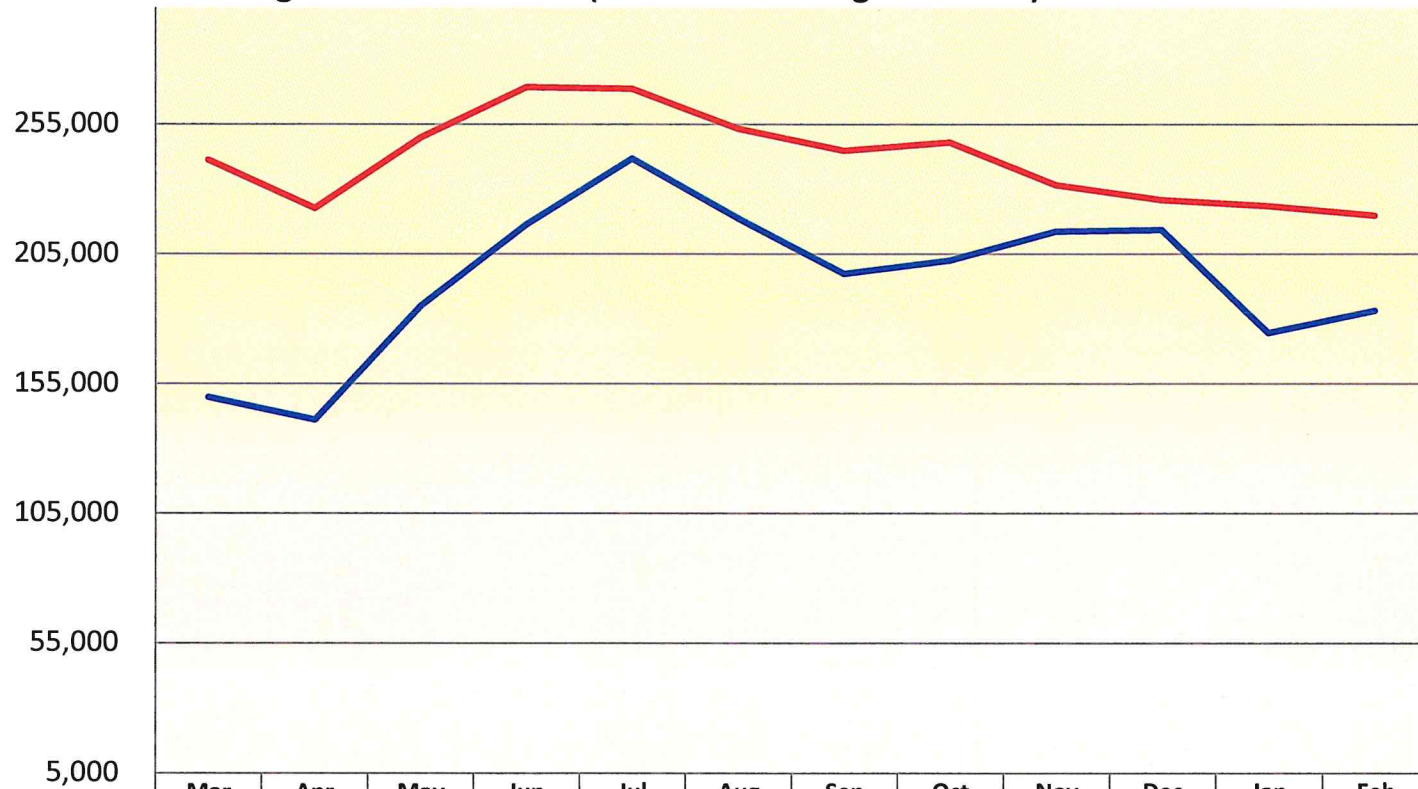


Des Moines Airport Authority
Traffic Statistics - February 2023

	Month of February		% Incr. (Decr.)	Year to Date		% Incr. (Decr.)
	2023	2022		2023	2022	
PASSENGERS						
Enplaned	110,273	92,575	19.1%	222,009	178,494	24.4%
Deplaned	109,473	90,506	21.0%	221,067	178,973	23.5%
Total	219,746	183,081	20.0%	443,076	357,467	23.9%
CARGO (LBS)						
Enplaned	2,208,720	2,573,769	-14.2%	4,860,512	4,930,072	-1.4%
Deplaned	2,581,802	3,082,727	-16.2%	5,261,783	5,890,315	-10.7%
Total	4,790,522	5,656,496	-15.3%	10,122,295	10,820,387	-6.5%
TOTAL PASSENGERS						
ALLEGIANT	39,265	34,098	15.2%	80,948	63,333	27.8%
AMERICAN	69,839	55,987	24.7%	136,495	108,355	26.0%
DELTA	33,591	32,394	3.7%	69,315	66,311	4.5%
FRONTIER	5,398	6,754	-20.1%	11,554	13,298	-13.1%
SOUTHWEST	20,438	17,756	15.1%	41,872	34,982	19.7%
UNITED	50,280	35,449	41.8%	99,881	68,574	45.7%
CHARTERS	935	643	45.4%	3,011	2,614	15.2%
Total	219,746	183,081	20.0%	443,076	357,467	23.9%

Monthly Passenger Totals

Rolling 12-Month Periods (most recent at right of table)



	Mar	Apr	May	Jun	Jul	Aug	Sep	Oct	Nov	Dec	Jan	Feb
— 12-24 Months Prior	149,712	141,067	184,896	216,234	241,707	218,544	197,207	202,376	213,591	214,176	174,386	183,081
— Prior 12 Months	241,151	222,479	249,721	269,247	268,581	253,168	244,672	247,932	231,475	225,777	223,330	219,746
% change	61.1%	57.7%	35.1%	24.5%	11.1%	15.8%	24.1%	22.5%	8.4%	5.4%	28.1%	20.0%

Passenger Airline Market Share For the Month of February 2023

