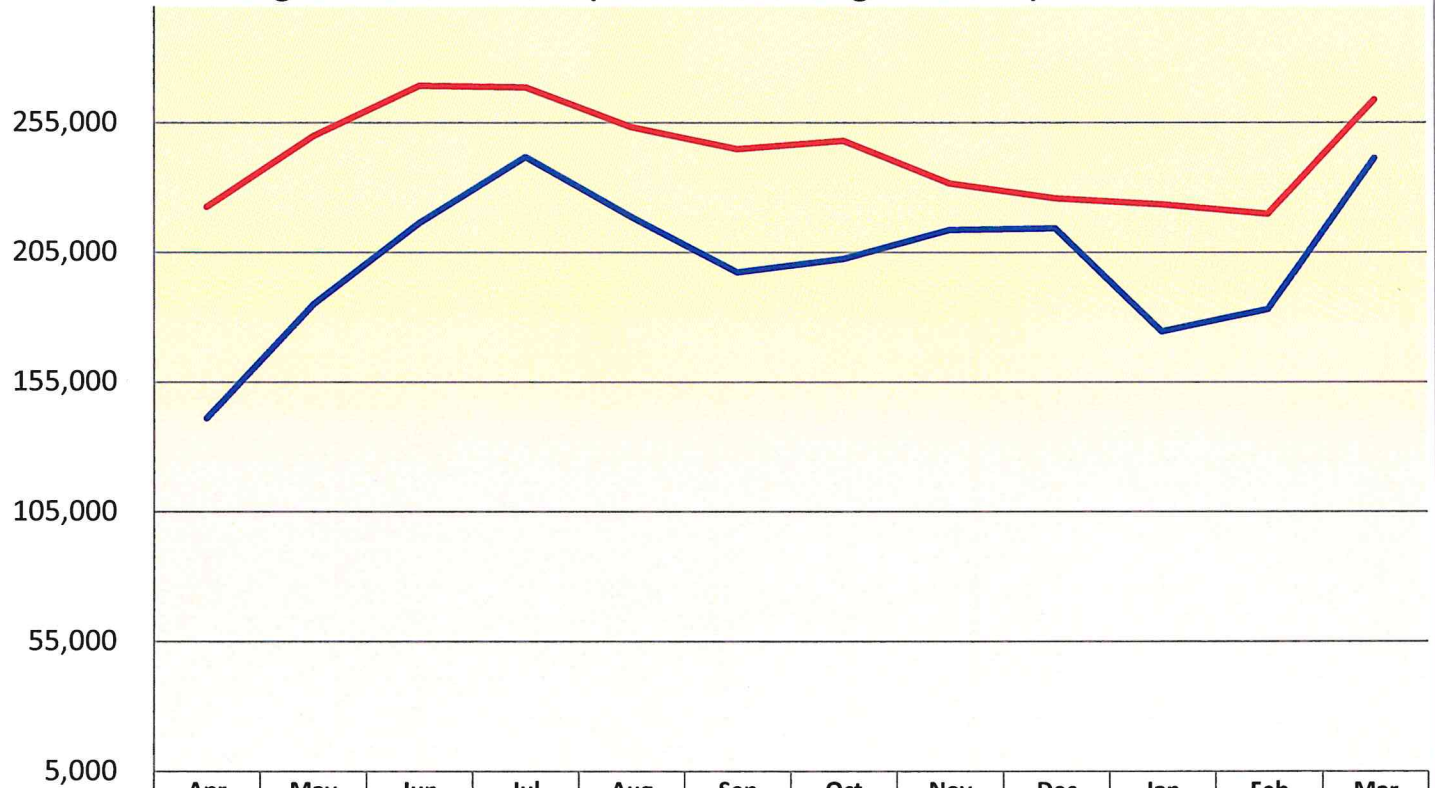


Des Moines Airport Authority  
Traffic Statistics - March 2023

	Month of March		% Incr. (Decr.)	Year to Date		% Incr. (Decr.)
	2023	2022		2023	2022	
<b>PASSENGERS</b>						
Enplaned	129,840	119,411	8.7%	351,849	297,905	18.1%
Deplaned	133,756	121,740	9.9%	354,823	300,713	18.0%
Total	263,596	241,151	9.3%	706,672	598,618	18.1%
<b>CARGO (LBS)</b>						
Enplaned	2,604,118	3,333,284	-21.9%	7,464,630	8,263,356	-9.7%
Deplaned	3,215,066	4,093,699	-21.5%	8,476,849	9,984,014	-15.1%
Total	5,819,184	7,426,983	-21.6%	15,941,479	18,247,370	-12.6%
<b>TOTAL PASSENGERS</b>						
ALLEGiant	57,928	54,530	6.2%	138,876	117,863	17.8%
AMERICAN	81,221	72,723	11.7%	217,716	181,078	20.2%
DELTA	41,123	39,886	3.1%	110,438	106,197	4.0%
FRONTIER	4,690	10,889	-56.9%	16,244	24,187	-32.8%
SOUTHWEST	24,633	23,621	4.3%	66,505	58,603	13.5%
UNITED	51,073	38,288	33.4%	150,954	106,862	41.3%
CHARTERS	2,928	1,214	141.2%	5,939	3,828	55.1%
Total	<u>263,596</u>	<u>241,151</u>	<u>9.3%</u>	<u>706,672</u>	<u>598,618</u>	<u>18.1%</u>

## Monthly Passenger Totals

Rolling 12-Month Periods (most recent at right of table)



	Apr	May	Jun	Jul	Aug	Sep	Oct	Nov	Dec	Jan	Feb	Mar
12-24 Months Prior	141,067	184,896	216,234	241,707	218,544	197,207	202,376	213,591	214,176	174,386	183,081	241,151
Prior 12 Months	222,479	249,721	269,247	268,581	253,168	244,672	247,932	231,475	225,777	223,330	219,746	263,596
% change	57.7%	35.1%	24.5%	11.1%	15.8%	24.1%	22.5%	8.4%	5.4%	28.1%	20.0%	9.3%

# Passenger Airline Market Share For the Month of March 2023

