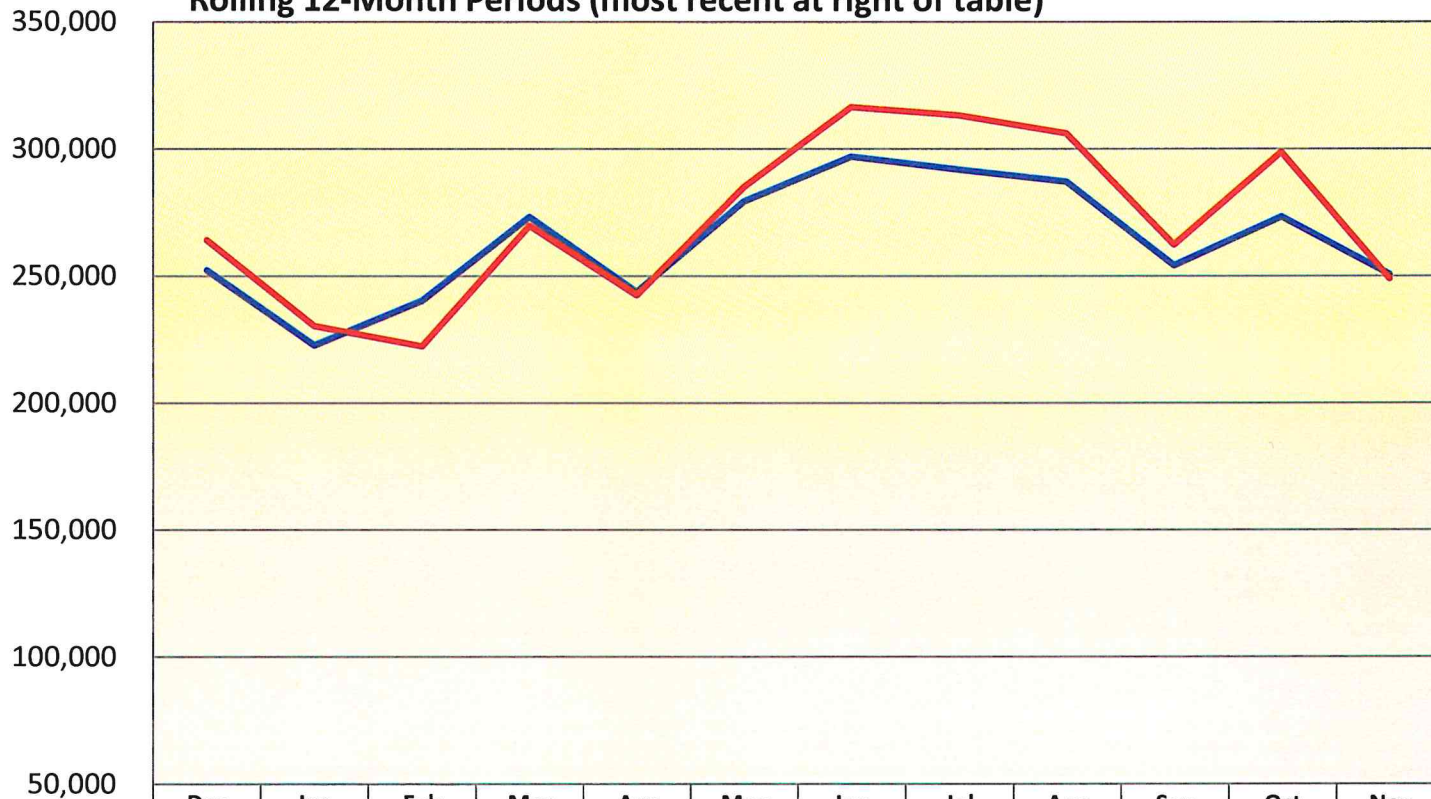


Des Moines Airport Authority  
Traffic Statistics - November 2025

	Month of November			% Incr. (Decr.)	Year to Date		% Incr. (Decr.)
PASSENGERS	2025	2024			2025	2024	
Enplaned	125,439	125,773		-0.3%	1,495,161	1,451,084	3.0%
Deplaned	123,556	124,880		-1.1%	1,500,778	1,461,677	2.7%
Total	248,995	250,653		-0.7%	2,995,939	2,912,761	2.9%
CARGO (LBS)							
Enplaned	883,989	1,155,937		-23.5%	12,552,749	22,606,369	-44.5%
Deplaned	1,435,183	1,468,021		-2.2%	17,281,717	25,897,352	-33.3%
Total	2,319,172	2,623,958		-11.6%	29,834,466	48,503,721	-38.5%
<b>TOTAL PASSENGERS</b>							
ALLEGiant	46,346	36,324		27.6%	552,605	467,557	18.2%
AMERICAN	72,354	71,379		1.4%	843,204	836,637	0.8%
DELTA	42,600	45,132		-5.6%	526,673	500,578	5.2%
FRONTIER	4,570	6,402		-28.6%	46,231	77,884	-40.6%
SOUTHWEST	30,111	33,356		-9.7%	377,961	382,612	-1.2%
UNITED	51,416	56,032		-8.2%	639,571	633,132	1.0%
CHARTERS	1,598	2,028		-21.2%	9,694	14,361	-32.5%
Total	248,995	250,653		-0.7%	2,995,939	2,912,761	2.9%

## Monthly Passenger Totals

Rolling 12-Month Periods (most recent at right of table)



12-24 Months Prior

Prior 12 Months

% change

Dec

Jan

Feb

Mar

Apr

May

Jun

Jul

Aug

Sep

Oct

Nov

252,219 222,797 240,227 273,216 243,578 279,322 296,918 291,706 287,042 254,027 273,275 250,653

264,191 230,364 222,531 269,770 242,519 284,974 316,449 313,121 306,091 262,374 298,751 248,995

4.7% 3.4% -7.4% -1.3% -0.4% 2.0% 6.6% 7.3% 6.6% 3.3% 9.3% -0.7%

## Passenger Airline Market Share For the Month of November 2025

